

# Issues and Public Perceptions

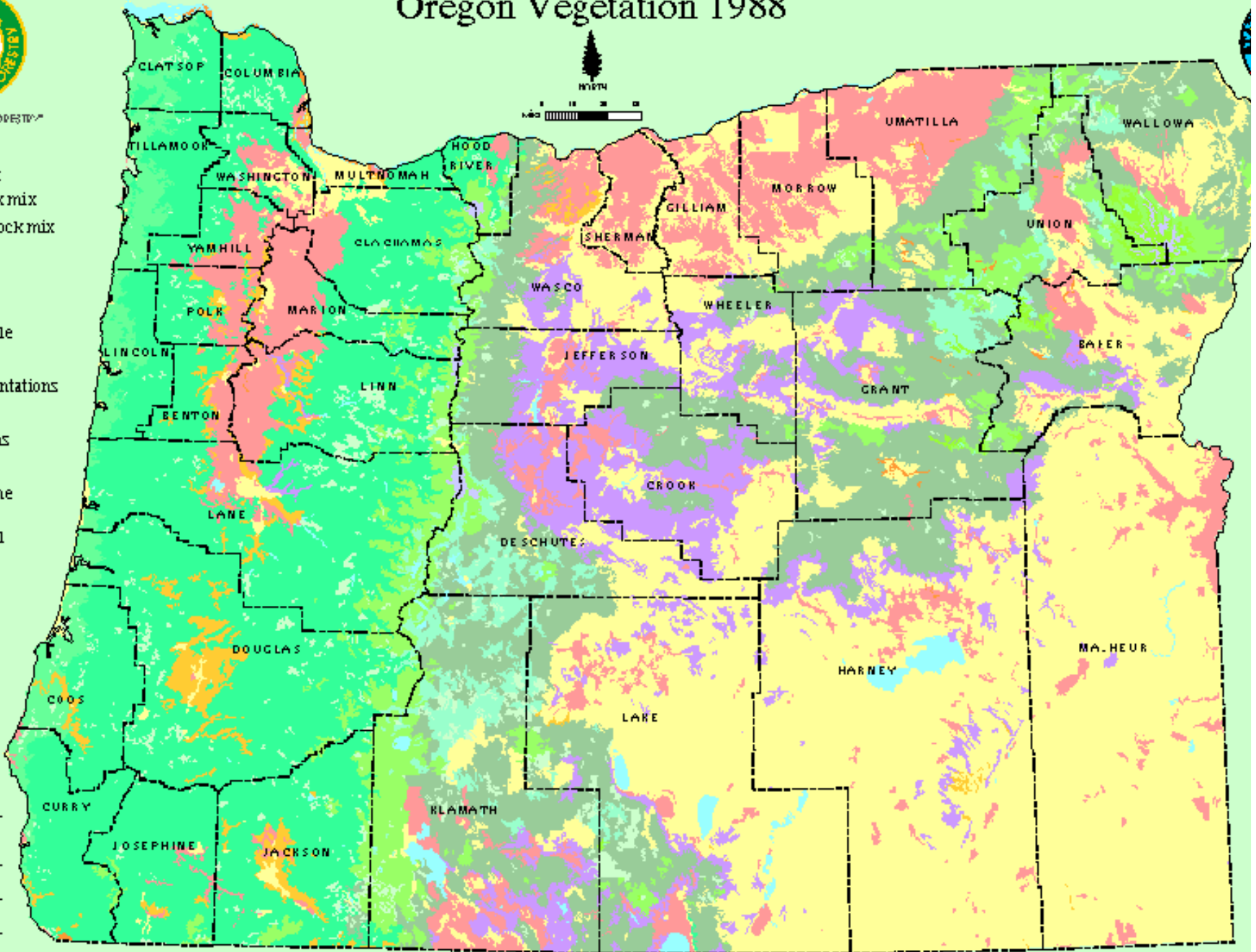
1. Environmental Groups, Forest Dependent Communities and Industry Cannot Develop a Common Vision for National Forest Management
2. The Administration and Agencies are treating the most critical parts of the forests, generating biomass significant enough to restore forest health and provide for economic development
3. Tree Harvest Contributes Carbon Dioxide to the Atmosphere Impacting Global Warming



VISION IN FORESTRY

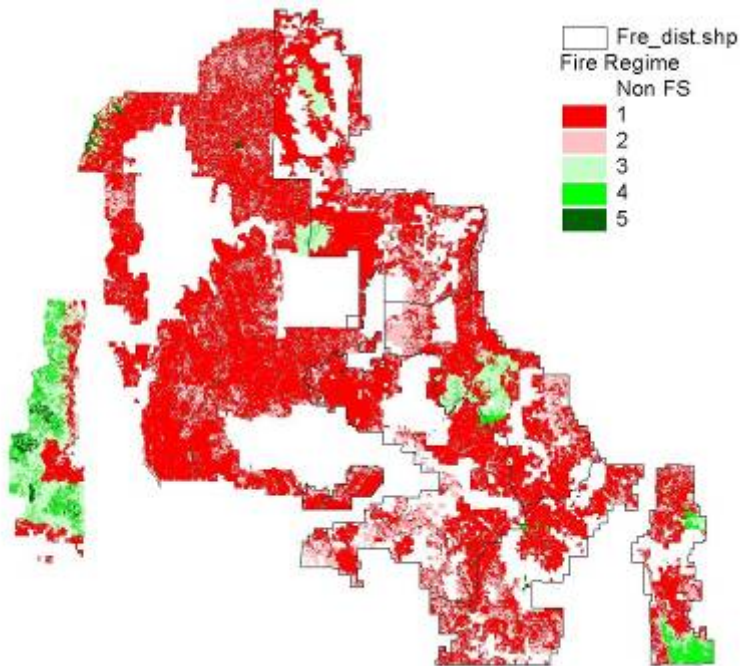
- is-fir /
- is-fir mix
- hemlock mix
- rain hemlock mix
- rosa pine
- ix
- pole pine
- ash, maple
- radrone
- ags or plantations
- r
- sted bums
- rest
- thral zone
- me and
- ommerical

# Oregon Vegetation 1988



Oregon  
DEPARTMENT OF

# Fremont-Winema Fire Regime Class



- 12% Class 1
- 28% Class 2
- 60% Class 3

*1,600 lightning strikes on July 12, 2002 started 65 fires. 90% of those were extinguished by initial attack crews at a quarter acre or less.*



Shannon Theall



Shannon Theall



**2002**

**Tool Box Complex : 85,864 acres**

**Grizzly Complex : 6,050 acres**

**Winter Fire: 35,779 acres**

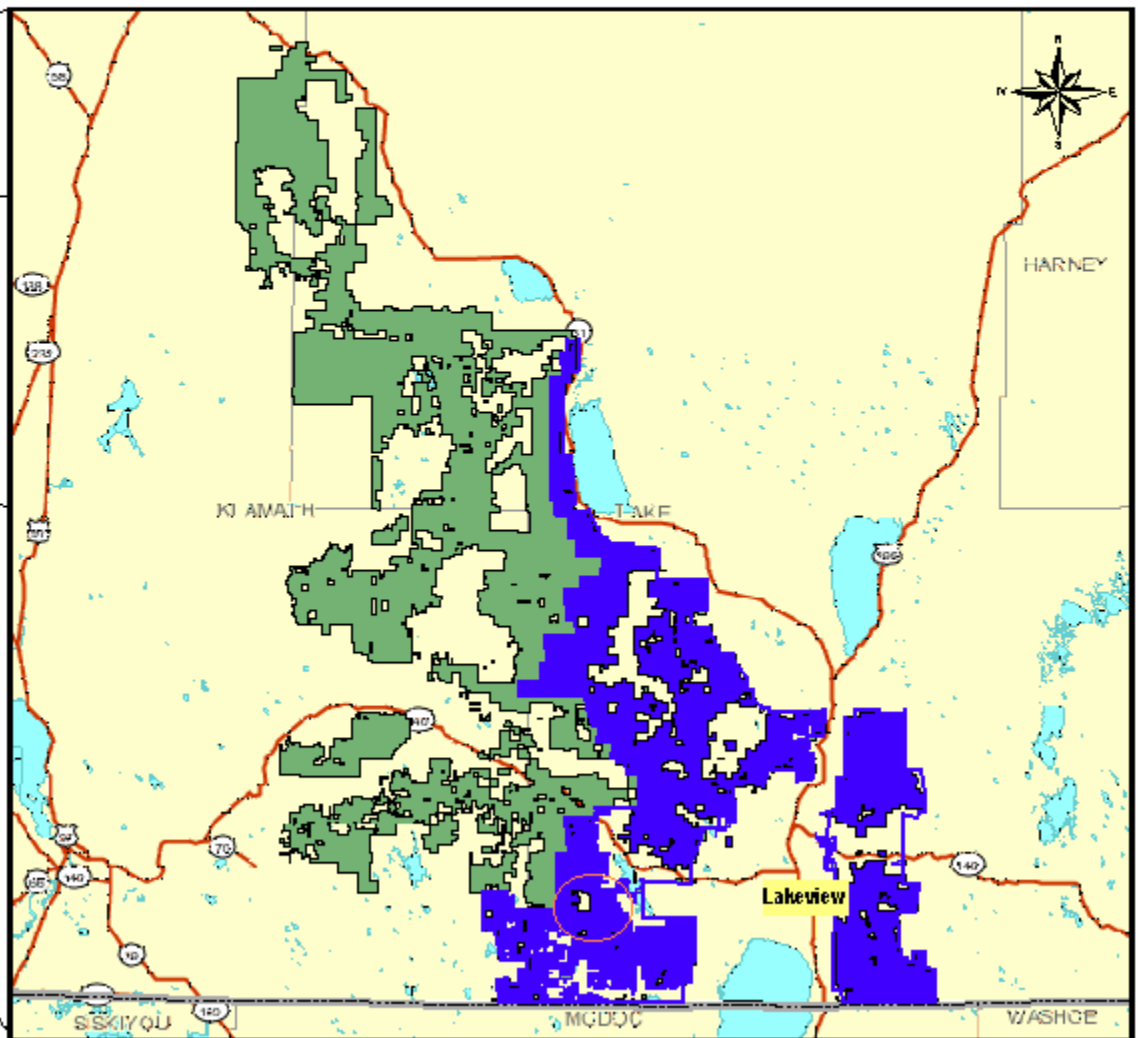
**Total of 127,693 acres**

# Currently Burning More Acres than Treating



# Fremont National Forest Boundary

## LAKEVIEW FEDERAL STEWARDSHIP UNIT (Sustained Yield Unit)



# **Lakeview Stewardship Group**

**The Collins Companies, Concerned Friends of the Fremont/Winema, Defenders of Wildlife, Fremont/Winema National Forest, Lake County Chamber of Commerce, Lake County Resources Initiative, Lakeview High School, Lakeview Ranger District, Oregon Department of Economic and Community Development, Paisley Ranger District, Sustainable Northwest, Oregon Natural Resource Council, The Wilderness Society, and Local Citizens**



# Vision

**The Lakeview Stewardship Group envisions a sustainable forest ecosystem that, through a new understanding of the interrelationships between the people and the land, will ensure quality of life for present and future generations.**



# Long-Range Strategy for the Lakeview Federal Stewardship Unit (LFSU)





# Issues

**Forest and Rangeland Health**

**Soils and Water**

**Fish and Wildlife**

**Roads**

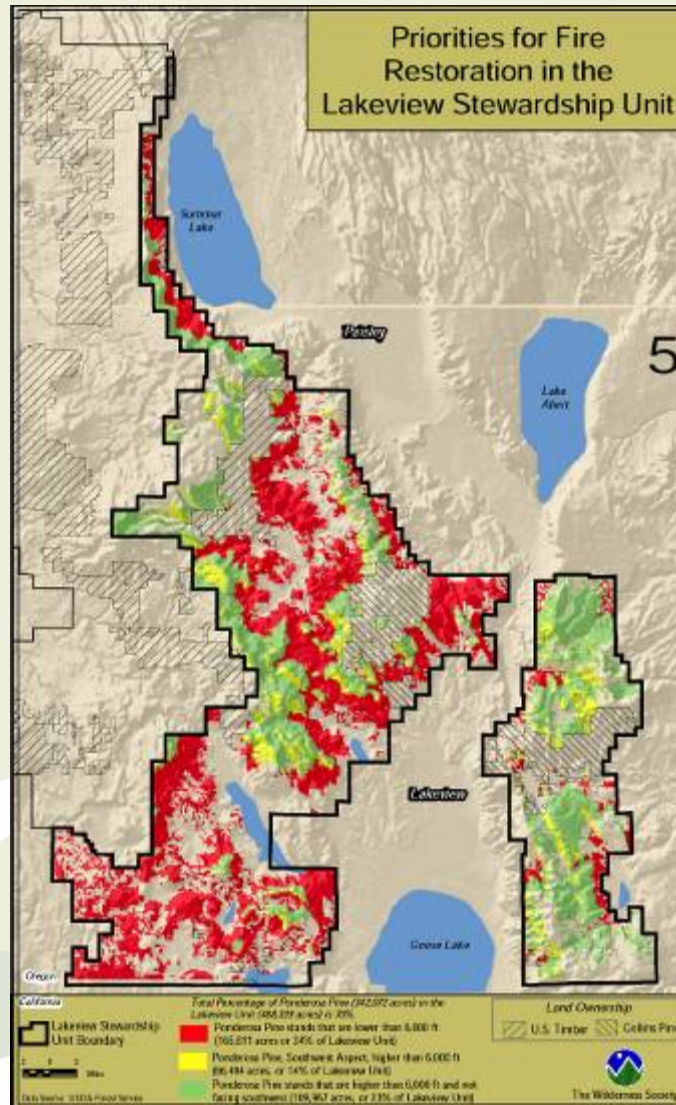
**Wilderness and Roadless Areas**

**Recreation**

**Community Benefits**

**Implementation and Economics**

# Fire Treatment Priorities



# Biomass Plant



<http://www.lcri.org>

# Oregon Solutions



- ***Governor Theodore Kulongoski's Office***
- ***Lakeview District Bureau of Land Management***
- ***Fremont-Winema National Forest***
- ***Lake County***
- ***The Collins Companies***
- ***Oregon State University***
- ***Defenders of Wildlife***
- ***Lake County Resources Initiative***
- ***DG Energy Solutions LLC***
- ***Town of Lakeview***
- ***Central Oregon Intergovernmental Council***
- ***Oregon Natural Resources Council***
- ***Oregon Department of Energy***
- ***Energy Trust of Oregon***
- ***Oregon Department of Environmental Quality***
- ***Oregon Economic and Community Development Department***
- ***West Coast Regional Carbon Sequestration Partnership (WESTCARB)***
- ***Sustainable Northwest***
- ***Klamath County Economic Development Association***
- ***The Wilderness Society***
- ***3EStrategies / Business Alliance for Sustainable Energy***
- ***Oregon Department of Forestry***
- ***Oregon Department of Fish and Wildlife***
- ***The South Central Oregon Economic Development District (SCOEDD)***

**<http://www.orsolutions.org/central/lakeviewbiomass.htm>**

# Administration/Agencies Targets

- The most acres at the cheapest cost
- The primary means is underburning without any previous treatment
- It means they are treating the lowest priority acres
- Agency staff are being told if they do not meet these targets their funds and jobs could go away
- This means the most critical areas continue to suffer uncharacteristically severe fire events, no jobs are created and there is no small diameter utilization



# Future Performance Measures

- **Collaboration with all stakeholders**
- **Maintain community capacity to utilize small diameter material**
- **Improvement of forest and watershed conditions**
- **Reduction in risk of uncharacteristically severe fire events**

<http://www.sustainablenorthwest.org>

Sustainable Policy

Rural Voices for Conservation Coalition

<b>Market and Non-Market Values of Fire Risk Reduction/acre</b>	<b>Moderate</b>	<b>High</b>
<i>Reduced fire fighting cost</i>	\$231	\$481
<i>The value of reduced facilities losses</i>	\$72	\$150
<i>The value of reduced fatalities</i>	\$4	\$8
<i>The value of lost timber amenities</i>	\$371	\$772
<i>Habitat losses</i>	?	?
<i>The community value of fire risk reduction</i>	\$63	\$63
<i>Carbon credits</i>	\$20	\$41
<i>Green energy credits</i>	?	?
<i>Electrical transmission cost reductions</i>	?	?
<i>Regeneration and rehabilitation costs</i>	\$58	\$120
<i>Water quantity and quality</i>	\$86	\$86
<i>Regional economic benefits</i>	\$386	\$386
<b>Total Benefits</b>	<b>\$1,291</b>	<b>\$2,107</b>

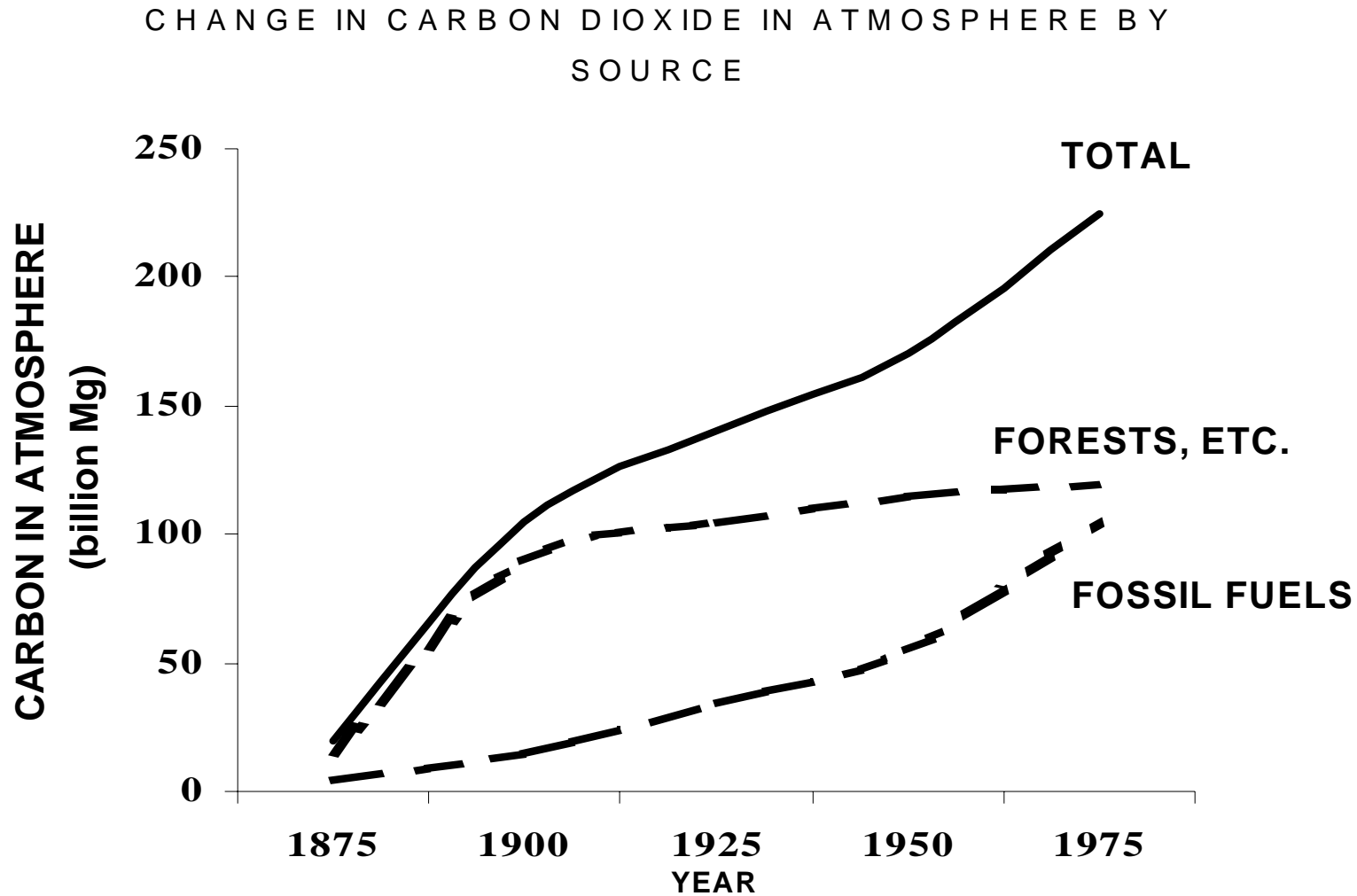
**Benefits**

**VS**

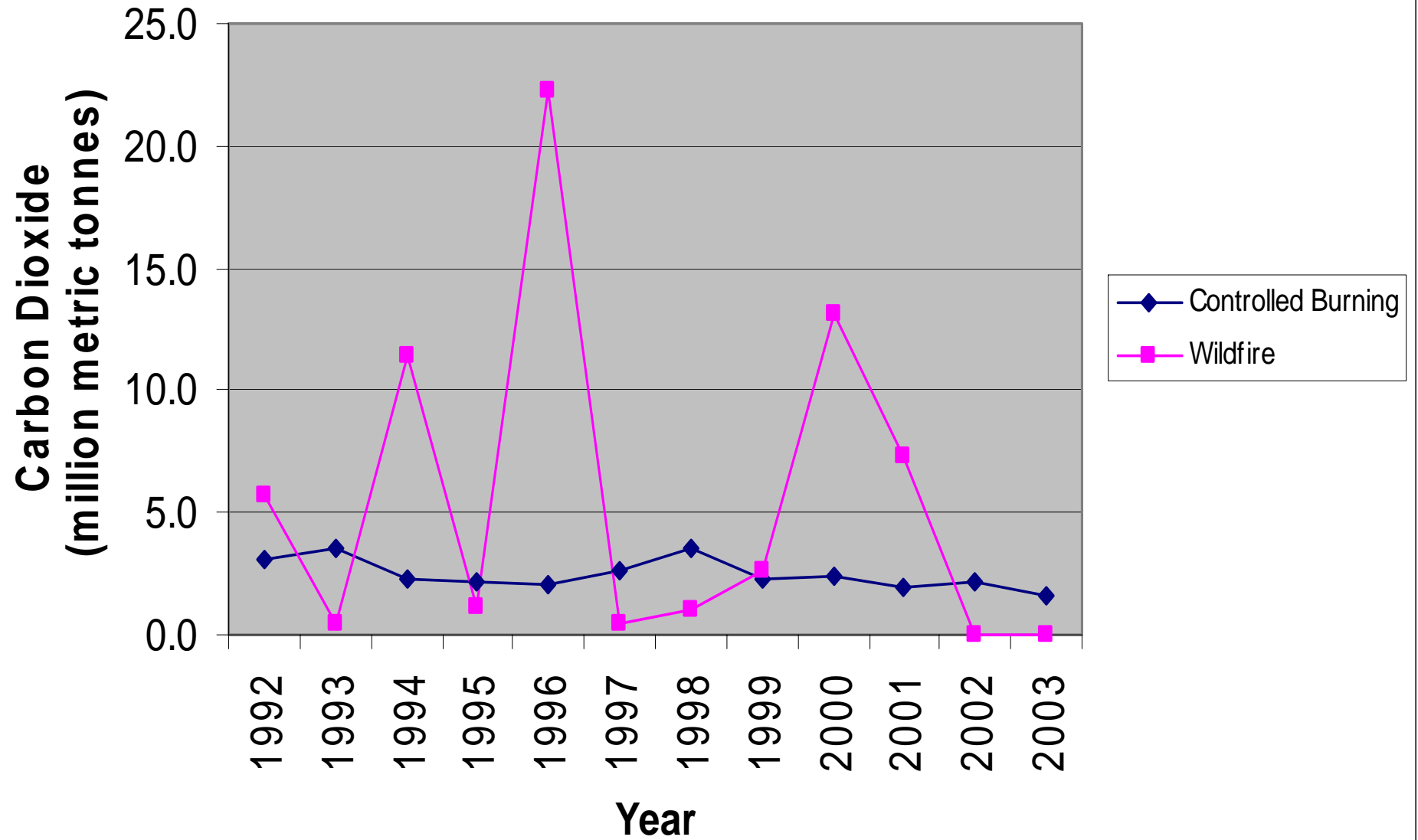
<b>Costs of Fire Risk Reduction/acre</b>	<b>Moderate</b>	<b>High</b>
<i>Operational costs</i>	\$374	\$374
<i>Forest Service contract preparation costs</i>	\$206	\$206
<i>Soil compaction</i>	?	?
<i>Sedimentation</i>	?	?
<i>Impacts to wildlife habitats</i>	?	?
<b>Total Costs</b>	<b>\$580</b>	<b>\$580</b>

**Costs**

**Carbon has been increasing in the atmosphere, first as a result of forest clearing and burning and more recently as a result of fossil fuel burning (from Stuvier 1978).**



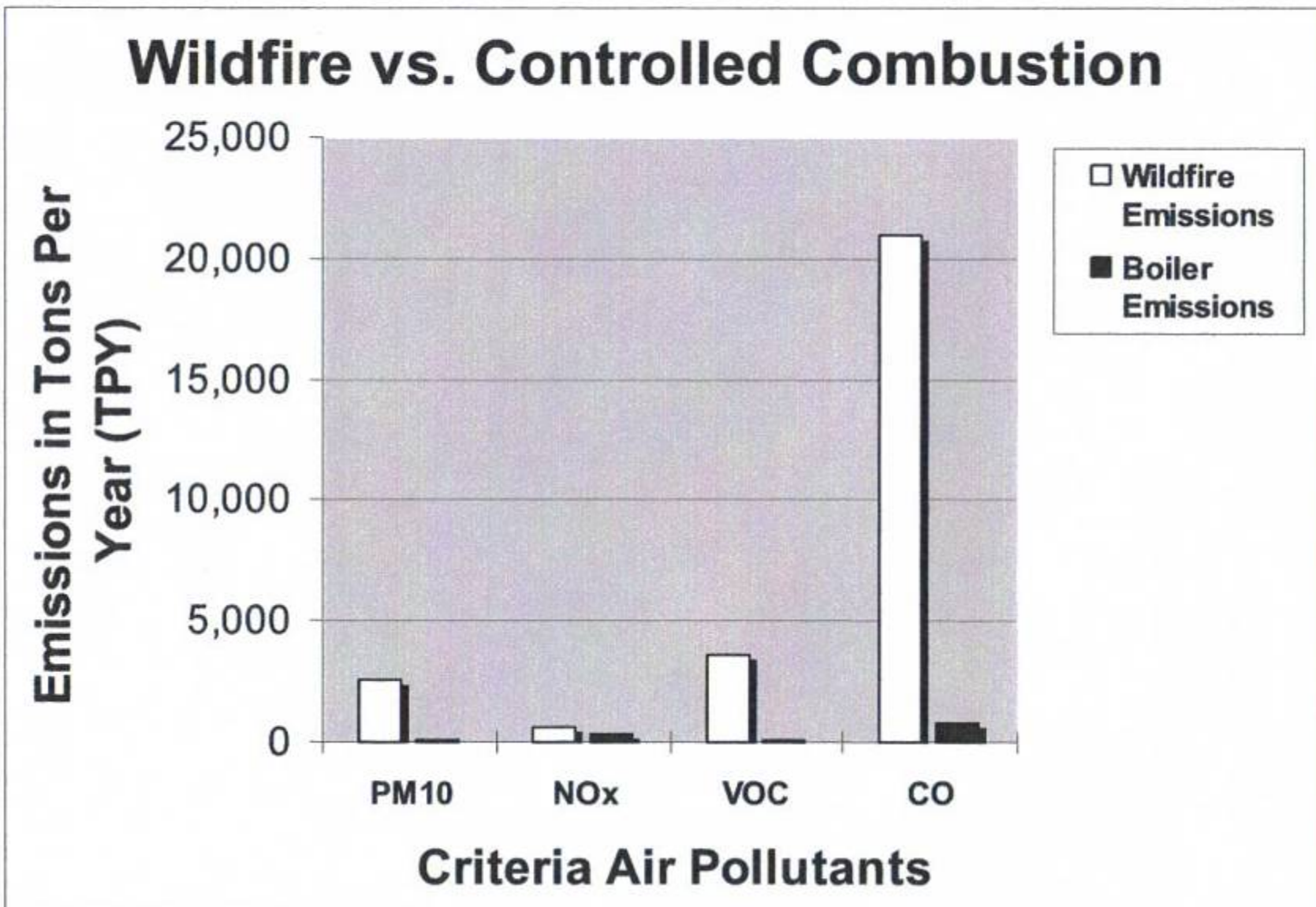
# Carbon Dioxide Emissions from Forest Burning



# Impacts of Forests on Kyoto

- 1997 Indonesia-40 million acres- 2 billion tons – 40% of world's industrial emissions
- 1959-1999 Canada- 27 million metric tons/year – 115 million metric tons – 20% of total emissions
- Recent research that remaining timber could contribute an equal amount of CO<sub>2</sub> overtime

**Figure 1. WILDFIRE & BIOMASS POWERPLANT EMISSIONS**  
(Based On U.S. EPA AP-42 Emission Factors &  
Proposed New Oregon Biomass Plant)



# Conclusions

- Stakeholders can work together for the environment and economy
- Changing agency performance measures is a priority and now is the time
- These catastrophic fire events are a world environmental problem